

ARROWSTREET
HILL INTERNATIONAL

NEWTON EARLY CHILDHOOD PROGRAM

PARKS AND RECREATION PRESENTATION

NEWTON, MA
24 FEBRUARY 2020

PROGRAM SUMMARY
SITE DESIGN AND PLAYGROUND



Program Summary and Design Guidelines

Projected NECP at 687 Watertown Street

Exterior/ Site

- » Outdoor age appropriate playground
- » Car-centric due to nature of program
- » Vans operation: 12 - 15 Vans
- » Parent/ guardian vehicles: 45 - 65
- » Staff vehicles: 85 - 100

Building/ Program

- » Building Size: 38,000 SF on 3 levels
- » Remove modulars
- » Occupancy:
 - 305 total students (ages 2.9 to under 6 years old)
 - 104 Special needs
 - 90 Typically developing
 - 111 Related services85 - 105 Staff
- » 17 Classrooms with support spaces

Features/ Goals

- » Improve pick-up/ drop off and entry to provide access and security for families and caregivers
- » Design with regard with understanding the mobility and sensory needs of population
- » Design for inclusiveness and spaces for specialists adjacent or within classrooms
- » Create shared specialist offices to foster collaboration and sharing between teachers

SITE DESIGN AND PLAYGROUND

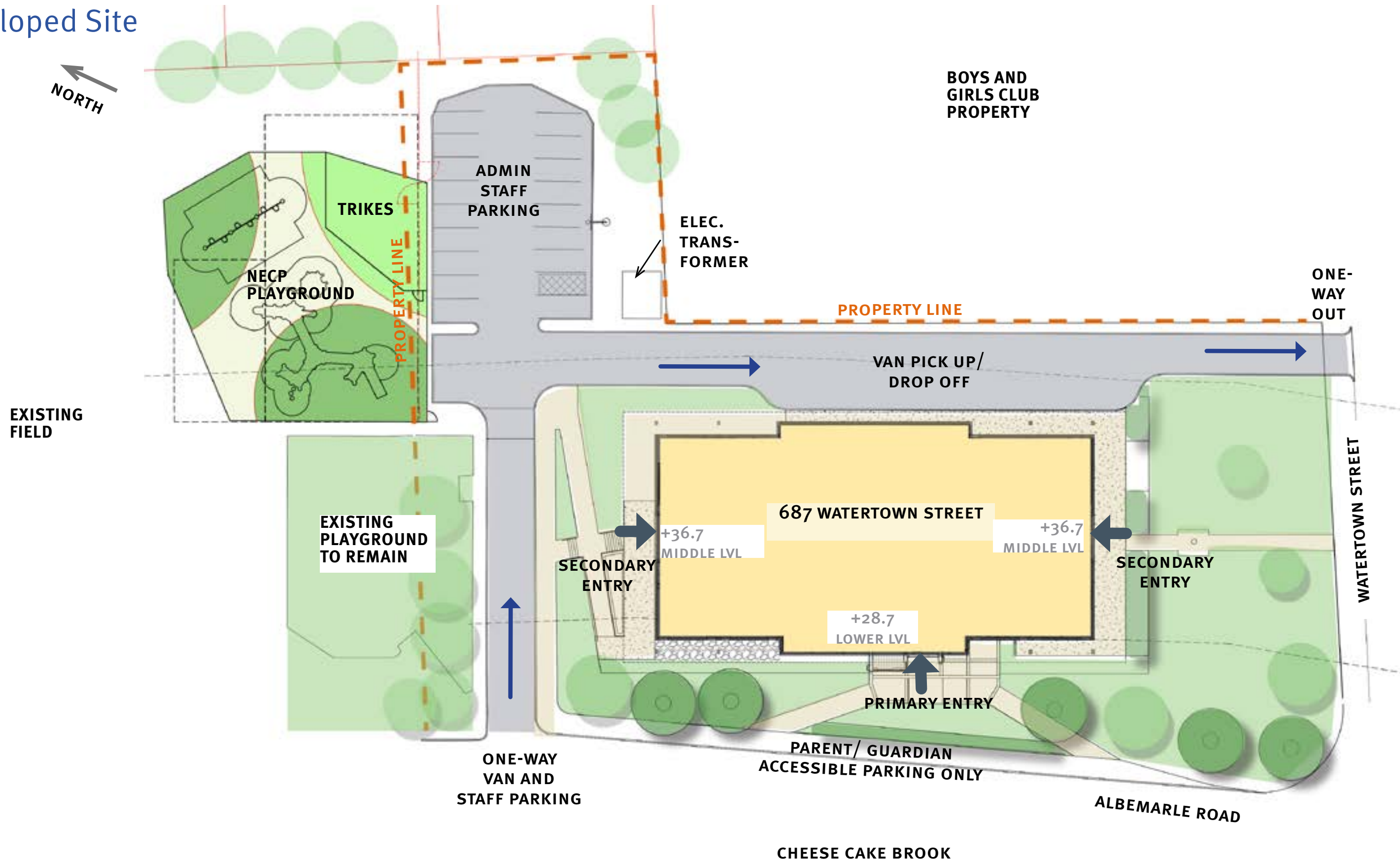
687 Watertown Street



687 Watertown Street



NECP Developed Site



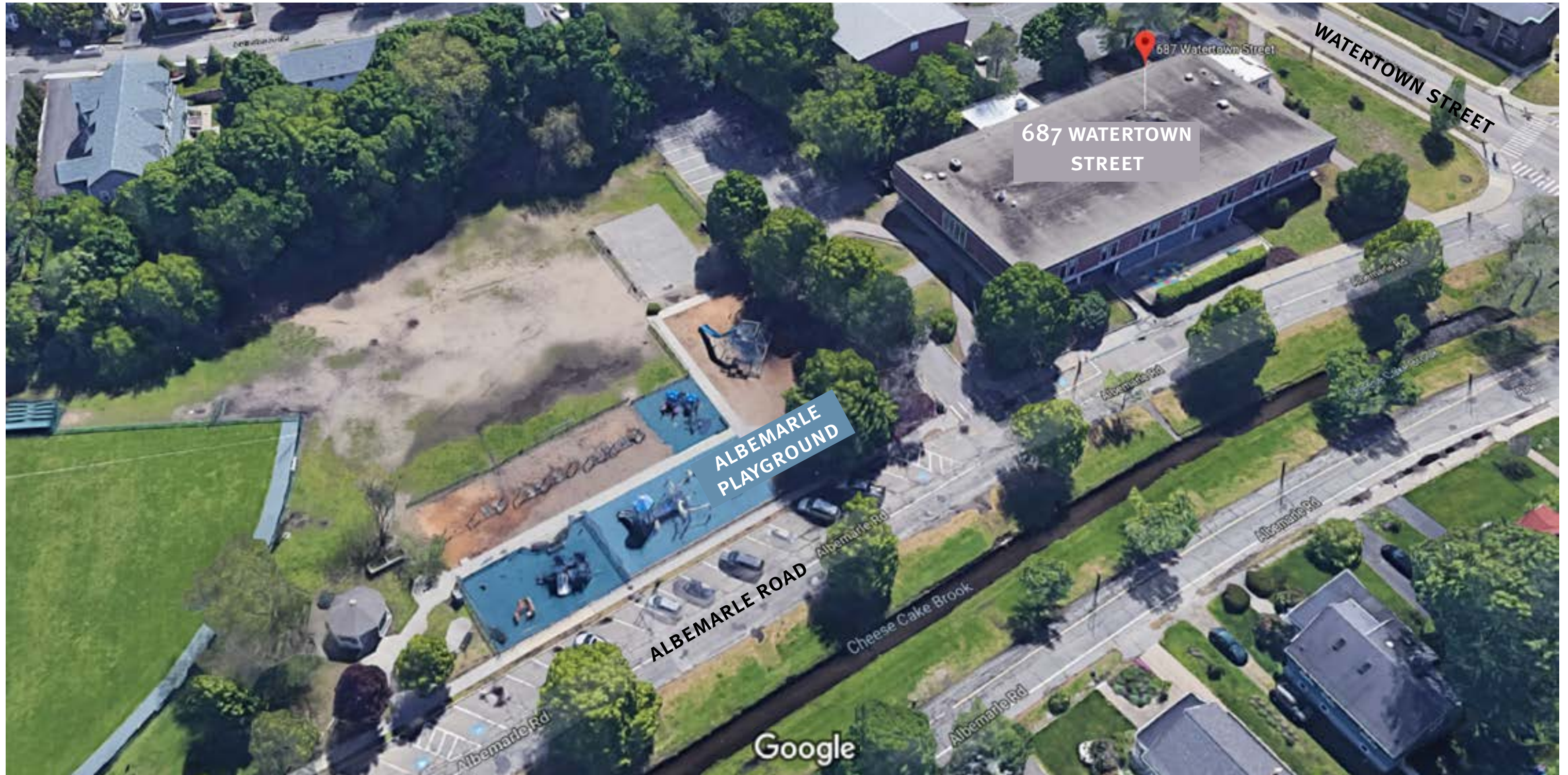
NECP
Site Aerial Perspective



NECP
Front Entrance



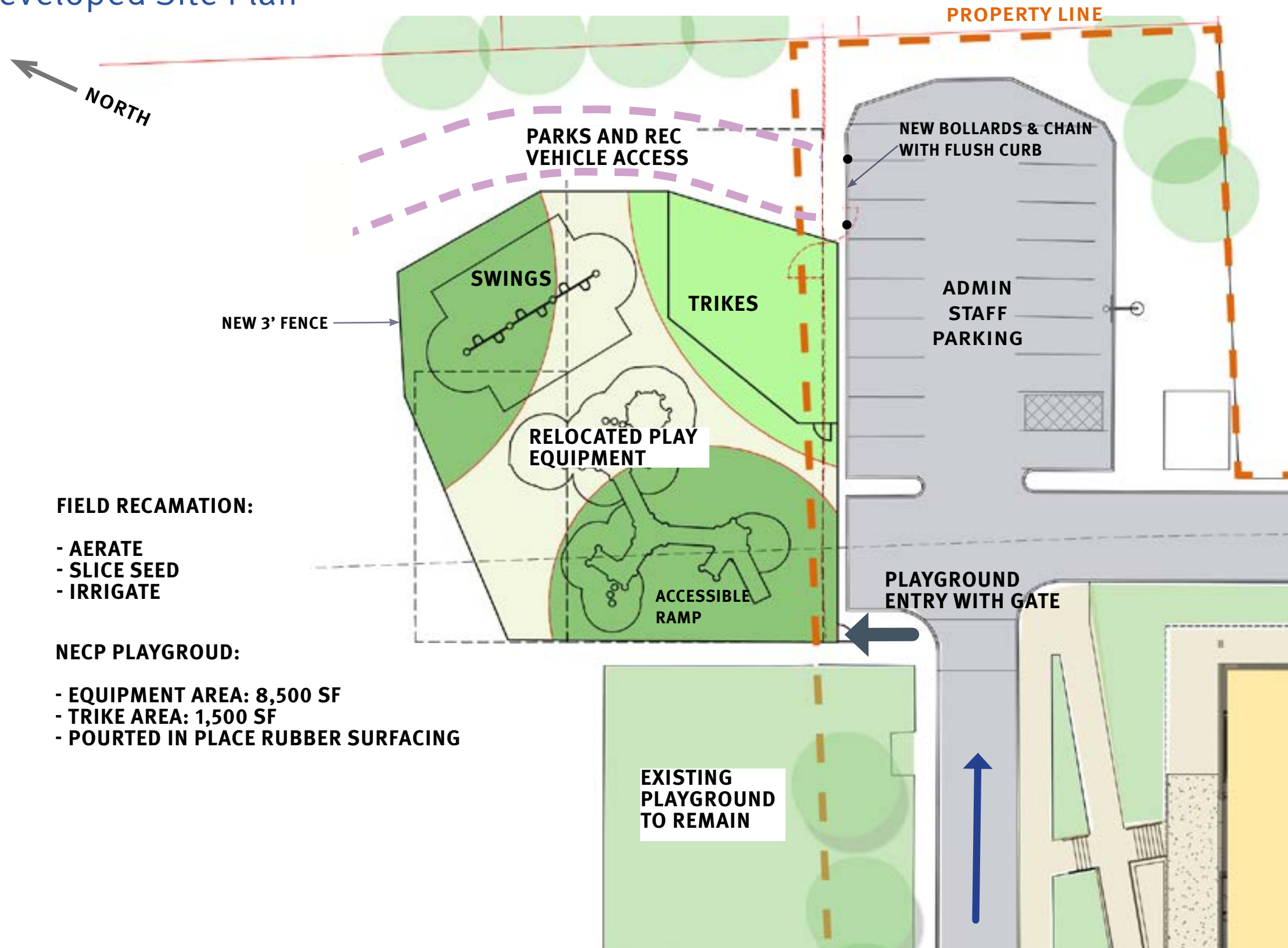
NECP PLAYGROUND



NECP PLAYGROUND



NECP Developed Site Plan



RUBBER SURFACING EXAMPLES



EQUIPMENT FROM 150 JACKSON



ARROWSTREET
HILL INTERNATIONAL

NEWTON EARLY CHILDHOOD PROGRAM

PARKS AND RECREATION PRESENTATION

NEWTON, MA
24 FEBRUARY 2020

PROGRAM SUMMARY
SITE DESIGN AND PLAYGROUND

